

DUAL GROUTING

» HEAVY DUTY PRECISION

MINING AND MINERALS

Dual grouting injection is widely used in modern tunnel construction to provide rock support. The grout strength and adhesion relies on high pressure injection as well as on the precise dosing of additives.

PCM progressing cavity pumps bring **RELIABILITY** and **SIMPLICITY** to the tunneling and building industries.

- Outstanding abrasion resistance
- High pressure outputs and constant flow
- Robust design for tough environment
- Non-pulsating flow
- Volumetric accuracy enabling precise and just in time dosing of critical hardeners
- Fast maintenance operations



PCM

keep it moving



PERFORMANCES

› PERFORMANCES

- Max flow rate: 200m³/h
- Max pressure: 40 bar

ADVANTAGES

› PCM MOINEAU™ TECHNOLOGY

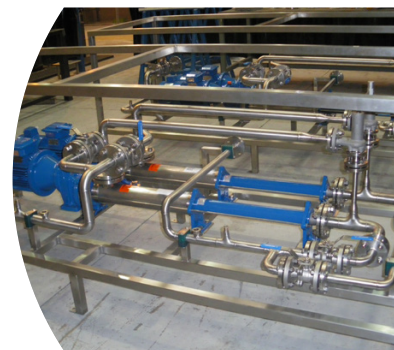
- Transfer abrasive fluids with minimal equipment wear
- **Constant and non-pulsating flow rate**, easing flow meters reading
- Flow rate directly proportional to speed
- Simple & heavy-duty design
- Vertical or horizontal mounting for easy integration
- **High efficiency**
- Powered by variable speed electric gear motor or hydraulic motor

› LOW LIFE CYCLE COSTS FROM ECOMOINEAU™ DESIGN

- Reduced wetted parts
- Reduced installed power
- Easy and fast maintenance
- Reduced foot print



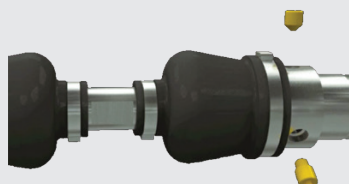
Barcelona metro - Spain
20L40 pumps on grout injection, 1 m³/h -40bar



Bespoke systems
EcoMoineau™ pumps are easy to integrate in your process.



› PCM EcoMoineau™



3 screws to complete maintenance

The shortest progressing cavity pump on the market