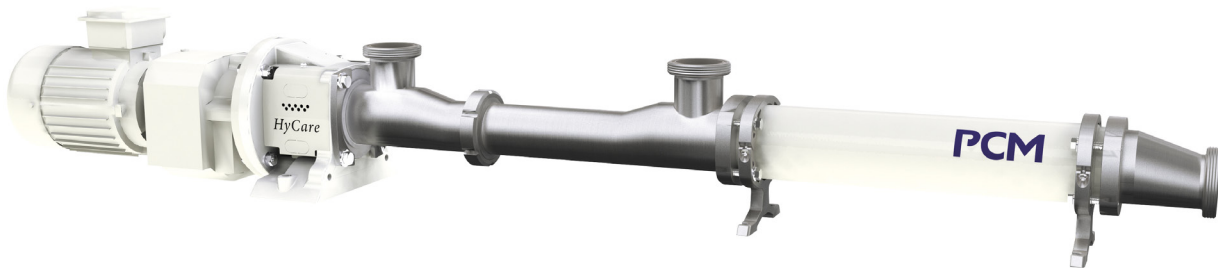


PRESS RELEASE

› HyCare™ : the progressing cavity pump that protects the fruits of your labour.

As part of the launching of its new progressing cavity pump, PCM has developed a communication campaign focused on its customers. Indeed, customers' satisfaction is always at the heart of PCM concerns. Thus, PCM shares commitment of its customers to excellence. Quality, safety and efficiency are the three ingredients PCM has used to create the new HyCare™ progressing cavity pump.

Featuring a patented body design developed using advanced computational fluid dynamics, PCM HyCare™ is the world's gentlest, most hygienic progressing cavity pump for food-grade applications. It's the first food-grade PCP to treat your ingredients, food safety requirements and budget with equal care.



› Quality

HyCare™ protects the quality and the texture of pumped products through Moineau technology. With a HyCare™ progressing cavity pump, 67% of the product texture is protected (compared with Lobes pumps and Bi-Wing pumps that only respect 15

› Safety

HyCare™ is the cleanest progressing cavity pump on the market. With 3-A and EHEDG certification, the HyCare™ pump guarantees optimum hygiene for your process.

› Efficiency

HyCare™ optimizes the production of its customers. This is the shortest hygienic progressing cavity pump on the market with its new Duraflex flexible shaft. This reduces product loss at the end of production to an absolute minimum.

PRESS RELEASE

› **HyCare™** : the progressing cavity pump that protects the fruits of your labour.

About PCM S.A.

Founded in 1932 by René Moineau, the inventor of the Progressing Cavity Pump, and Robert Bienaimé, from Gévelot Group, PCM is today one of the world's leading manufacturers of positive displacement pumps and fluid-handling equipment.

Our specialty is developing solutions for the lifting, transfer, dosing, mixing and filling of abrasive, fragile, viscous, corrosive, hot or heavy products. Present around the world, we provide solutions to three main sectors: Oil & Gas, Food and Industry.

PCM is divided into four clusters and has more than 20 branches and subsidiaries worldwide, gathering about 600 employees from 35 different nationalities. PCM continues to evolve to be closer to its customers by opening new subsidiaries: PCM Group Australia Pty Ltd in April 2013, LLP PCM Kazakhstan in July 2013 and recently PCM Chile Spa in April 2014.

PRESS CONTACT:

Amandine ROMAN-ROS
aromanros@pcm.eu
+33 (0)2.41.22.91.71

PCM S.A.
6 Boulevard Bineau
92 300 Levallois-Perret
FRANCE

www.pcm.eu

A large, light gray graphic consisting of three interlocking, wavy lines that resemble a stylized 'M' or a continuous wave pattern, positioned behind the slogan.

keep it moving